

### Specifications

Models	Z-45 XC	
Measurements	Metric	US
Working height maximum*	15.86 m	51 ft 6 in
Platform height maximum	13.86 m	45 ft 6 in
Horizontal reach maximum	7.55 m	24 ft 9 in
Up and over clearance maximum	7.44 m	24 ft 5 in
<b>A</b> Platform length	0.76 m	2 ft 6 in
<b>B</b> Platform width	1.83 m	6 ft
<b>C</b> Height - stowed	2.25 m	7 ft 4 in
<b>D</b> Length - stowed	6.66 m	21 ft 10 in
<b>E</b> Width	2.29 m	7 ft 6 in
<b>F</b> Wheelbase	2.03 m	6 ft 8 in
<b>G</b> Ground clearance - center	0.37 m	1 ft 2.5 in

### Productivity

Lift capacity	300/454 kg	660/1,000 lb
Platform rotation	160°	160°
Vertical jib rotation	135°	135°
Turntable rotation	355° non-continuous	
Turntable tailswing	zero	zero
Drive speed - stowed	7.24 km/h	4.5 mph
Drive speed - raised**	0.98 km/h	0.61 mph
Gradeability - 4WD - stowed***	45%	45%
Turning radius - inside	1.68 m	5 ft 6 in
Turning radius - outside	4.50 m	14 ft 9 in
Controls	12V DC proportional	
Tyres	315/55 D20	

### Power

Power source	Deutz D2011 L03i diesel, 3 cylinder 49hp (37kW) Stage IIIA Deutz TD2.2 L3 turbo diesel, 3 cylinder 49hp (37kW) Stage V	
Auxiliary power unit	12V DC	12V DC
Hydraulic tank capacity	83 L	22 gal
Fuel tank capacity	64.4 L	17 gal

### Sound & Vibration Levels

Sound pressure level (ground workstation)	87 dBA	87 dBA
Sound pressure level (platform workstation)	82 dBA	82 dBA
Vibration	<2.5 m/s <sup>2</sup>	<8 ft 2 in/s <sup>2</sup>

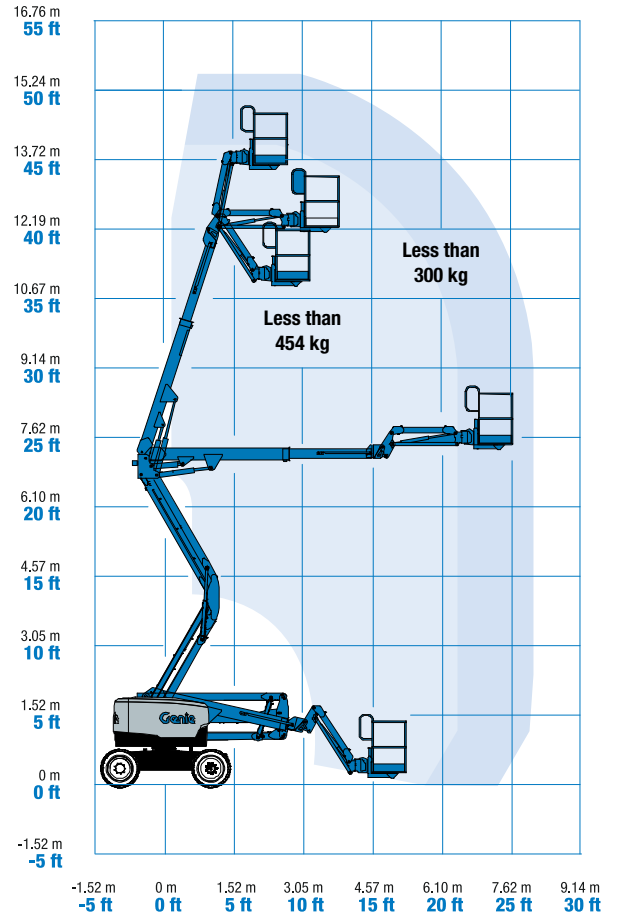
### Weight\*\*\*\*

CE 4WD (foam filled tyres)	7,421 kg	16,360 lb
----------------------------	----------	-----------

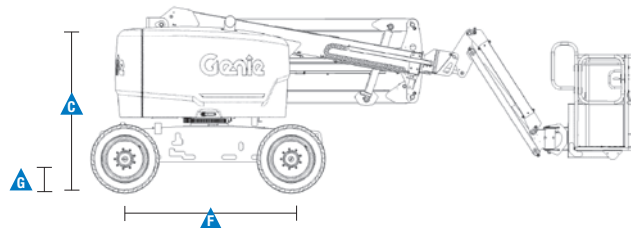
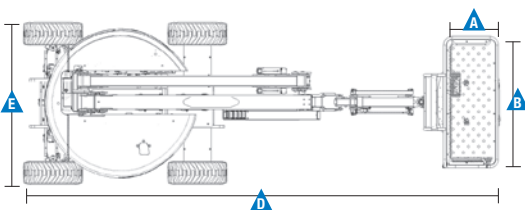
### Standards Compliance

EU Directives: 2006/42/EC - Machinery  
(harmonized standard EN 280:2013+A1:2015);  
2014/30/EU (EMC); 2000/14/EC (Outdoor Noise)

### Range Of Motion Z-45 XC



\* The metric equivalent of working height adds 2 m to platform height. U.S. adds 6 ft to platform height.  
\*\* In lift mode (platform raised), the machine is designed to operate on firm, level surfaces only.  
\*\*\* Gradeability applies to driving on slopes. See operator's manual for details regarding slope ratings.  
\*\*\*\* Weight will vary depending on options and/or country standards.



### Features

Standard Features	Easily Configured To Meet Your Needs	Options & Accessories
-------------------	--------------------------------------	-----------------------

#### Measurements

##### Z-45 XC

- 15.86 m (51 ft 6 in) working height
- 7.55 m (24 ft 9 in) horizontal reach
- 7.44 m (24 ft 5 in) up and over clearance
- Unrestricted lift capacity of 300 kg (660 lb) with restricted envelope of 454 kg (1,000 lb)

#### Productivity

- Self-leveling platform
- Hydraulic platform rotation
- Proportional joystick controls
- Telematics-Ready Connector
- Thumb rocker steering
- Drive enable
- Chassis tilt drive function cut-out
- AC power cord to platform
- Horn
- Hour meter
- Tilt alarm
- Descent & travel alarms
- Flashing beacon
- 355° non-continuous turntable rotation
- Positive traction drive
- Zero tailswing
- Dual parallelogram for vertical wall tracking
- Two speed wheel motors
- Lift Connect<sup>™</sup> Telematics
- Lift Guard<sup>™</sup> Contact Alarm
- Lift Tool<sup>™</sup> Work Tray

#### Power

- 12 V DC auxiliary power
- Engine protection package
- Deutz intake air heater
- Swing out engine tray

#### Platform

- Steel 1.83 m (6 ft) dual entry with sideswing gate (standard)

#### Jib

- Articulating 1.52 m (5 ft) jib boom

#### Power

- Deutz D2011 L03i diesel, 3 cylinder 49hp (37kW) Stage IIIA
- Deutz TD2.2 L3 turbo diesel, 3 cylinder 49hp (37kW) Stage V

#### Drive

- 4 x 4

#### Axle

- Active oscillation

#### Tyre Options

- Rough terrain foam-filled (standard)
- Rough terrain non-marking foam-filled

#### Productivity

- Half mesh platform<sup>(1)</sup>
- Platform auxiliary top rail
- Air line to platform
- Power to platform: plug, socket, with optional Residual-current Circuit Breaker with Overcurrent protection
- Work lights package (2 on chassis, 2 on platform)<sup>(1)</sup>
- Biodegradable hydraulic oil
- Chassis tilt lift function cut-out (software setting)
- Track & Trace<sup>(2)</sup> (GPS unit providing machine location & operating information)
- Lockable platform control box cover
- Tool tray<sup>(3)</sup>
- Operator Protective Structure<sup>(3)</sup>
- Fall Arrest Bar<sup>(3,4)</sup>
- Panel cradle package<sup>(1,4)</sup>
- Half mesh platform inserts
- Full mesh platform inserts

#### Power

- Lift Power<sup>™</sup> 3kW AC generator, 110V/50Hz or 220V/50Hz
- Diesel catalytic scrubber muffler with spark arrestor<sup>(1)</sup>
- Engine gauge package (oil pressure & temperature and voltage)<sup>(1)</sup>
- Low temperature cut-out module
- EMEAR Cold Start kit: Inc. Engine heater & battery charger



<sup>(1)</sup> Factory-fit option only  
<sup>(2)</sup> Includes a first 2 years subscription  
<sup>(3)</sup> Aftermarket only  
<sup>(4)</sup> Fall arrest bar not available with panel cradle and viceversa