

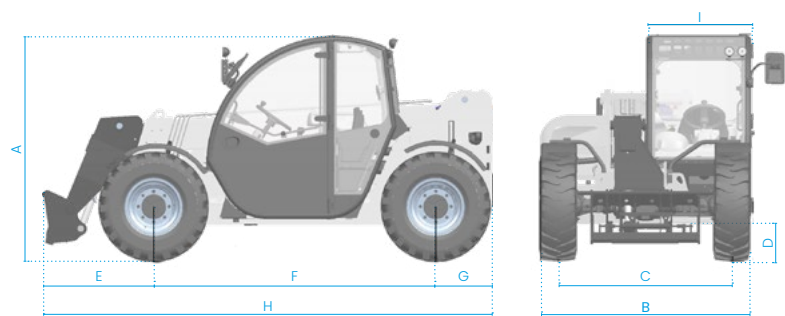
6.26 FULL ELECTRIC

TECHNICAL SHEET



6.26 FULL ELECTRIC

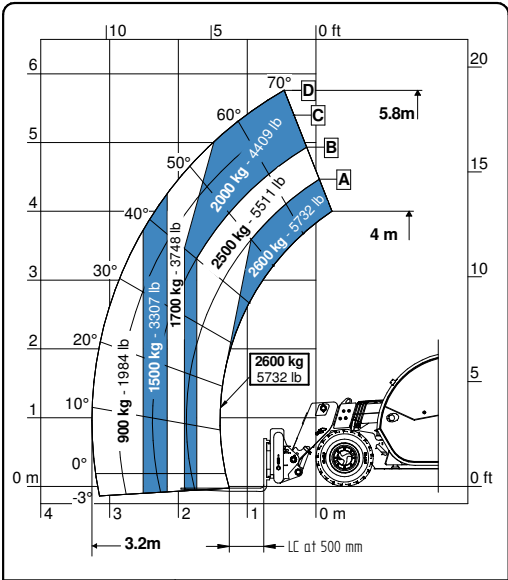
TECHNICAL FEATURES



Models		6.26
Dimensions		
[A] Height	mm	1935
[B] Width	mm	1890
[C] Track	mm	1550
[D] Ground clearance	mm	220
[E] Front overhang	mm	990
[F] Pitch	mm	2525
[G] Rear overhang	mm	520
[H] Length without tow hook	mm	4035
[I] Cab width	mm	960
Loading system		
Lifting capacity	kg	2600
Lifting height	m	5,9
Max horizontal boom extension	m	3,2
Boom extension at max height	m	0,3
Number of extracting sections	n.	1
Swinging Angle	°	155
Tank capacity		
Hydraulic oil tank	l	70
Connection equipment		
FH		●
Euro		○
Weights		
Maximum unladen weight	kg	4800

Models		6.26
		○
		●
Tyres		
Turning radius	m	3,25
16" OFFSET -10 WHITE		●
16.5" OFFSET -10 NM WHITE		○
12.5-18LT MPT-01OFFSET -10		○
435/50 R19.5 RICOPERTE TRATTRICI		○
DA NEVE 340/80 R18 OFFSET-10		○
16" OFFSET -10 PIENE		○
13.0/65 -18		○
12-16.5" BKT SURE TRAX HD ET -10 CERCHIO BIANCO		○

● Standard
 ○ Optional
 - Not available



6.26 Full Electric

6.26 FULL ELECTRIC

CONFIGURATIONS

configuration		6.26
Engine		
Transmission	kW	30 (S2)
Hydraulic services	kW	18 (S3)
Hydraulics		
Pump type		Gears
Hydraulic flow-rate	l/bar	80/230
Distributor		Mechanical proportional
Hydraulic quick release with manual 6 way diverter		<input type="radio"/>
Boom suspension		<input type="radio"/>
Floating boom		<input type="radio"/>
Manual 6-way diverter valve		<input type="radio"/>
Constant front flow		<input type="radio"/>
Boom Electric Socket (PEB)		<input type="radio"/>
Boom double hydraulic jack (only available with PEB)		<input type="radio"/>
Transmission		
Electric 12 km/h		<input checked="" type="radio"/>
Axles		
45% limited slip self-locking differential front axles		<input checked="" type="radio"/>
Open type differential rear axles		<input checked="" type="radio"/>
Brakes		
Service brake		Multi-disc in oil bath
Parking brake		Multi-disc in oil bath with negative drive type SAHR
Pneumatic / hydraulic trailer brake		<input type="radio"/>
Lights		
LED front and rear work lights		<input type="radio"/>
LED boom work lights		<input type="radio"/>
Trailer lights rear socket		<input type="radio"/>
Cabin		
Cabin		Standard
Radio presetting		<input type="radio"/>
Protection grille for windscreen		<input type="radio"/>
Rear mirror		<input type="radio"/>
Special features		
Air conditioning		<input type="radio"/>
Forward buzzer avas		<input type="radio"/>
Telematics Farmatics FULL (2-5 years)		<input type="radio"/>

☒ Standard ☐ Optional - Not available

Batteries *		315	420	560
Performance				
Type		Lithium battery LFP		
Rated energy	kW/h	24	32	43
Rated voltage	V	80	80	80
Capacity	Ah	315	420	560
Autonomy				
Autonomy standard cycle intensive (eco mode)		3 h	4 h	6 h
Autonomy standard cycle not intensive (eco mode)		6 h	8 h	11 h
Chargers *				
Standard				
Average 0-100% charging time - On-board single-phase 3.6 kW 16 A AC charger		8 h 15 m	11 h 40 m	14 h 50 m
Options				
Average 0-100% charging time - External three-phase 7.2 kW 18 A charger		4 h 50 m	6 h 20 m	8 h
Average 0-100% charging time - External three-phase 43 A AC fast charger		2 h	2 h 45 m	3 h 40 m
Average 0-100% charging time - On-board 6.4 kW 16 A AC fast charger		3 h 20 m	4 h 30 m	5 h 40 m

* The values given may vary, even significantly, due to environmental conditions, the mode of use and the charging system. They may also be affected by other non-predictable or non-measurable factors.

SUSTAINABILITY **THAT WORKS**

**FARESIN INDUSTRIES SPA
HEADQUARTERS**

Via dell'Artigianato, 36
36042 Breganze (Vicenza), Italy
Tel. + 39 0445 800300
faresin@faresin.com

FARESIN DEUTSCHLAND GMBH

Steinach B.R. - an der
Frankenhoehe 1
91605 Gallmersgarten, Germany
Tel. +49 9843 9802828
lager@faresin.de

**FARESIN DEUTSCHLAND
NORD GMBH**

Wissmannstr, 59
27755 Delmenhorst, Germany
Tel. +49 4221 800 989-0
info@faresin-nord.de

FARESIN POLAND SP. Z O.O.

ul. Borowiacka 9
87-100 Torun, Polska
Tel. +48 503 147 811
poland@faresin.com

**FARESIN INDUSTRIES
FRANCE**

2 Rue de l'Avenir 14460
Colombelles, France
Tel + 33 2 31 82 79 61
france@faresin.com

It brings to the attention of all potential customers, all recipients, and to the maximum extent possible, external interlocutors, that Faresin Industries S.p.A. adopts a general Disclaimer regarding the description of the technical and functional characteristics of its machineries, as well as the manner of their use, also with regard to their safety. The Disclaimer must be understood as having a general scope, and therefore Faresin Industries s.p.a. invites to know it, also by accessing the website: [faresin.com](https://www.faresin.com)

FARESIN.COM



04.2025