

### Specifications

Models	SX-105 XC		SX-125 XC	
Measurements	Metric	US	Metric	US
Working height maximum*	34.00 m	111 ft	40.10 m	131 ft
Platform height maximum	32.00 m	105 ft	38.10 m	125 ft
Horizontal reach maximum	24.38 m	80 ft	24.38 m	80 ft
Below ground reach	2.69 m	8 ft 10 in	2.69 m	8 ft 10 in
<b>A</b> Platform length - 8 ft model	0.91 m	3 ft	0.91 m	3 ft
Platform length - 6 ft model	0.76 m	2 ft 6 in	0.76 m	2 ft 6 in
<b>B</b> Platform width - 8 ft model	2.44 m	8 ft	2.44 m	8 ft
Platform width - 6 ft model	1.83 m	6 ft	1.83 m	6 ft
<b>C</b> Height - stowed	3.05 m	10 ft	3.05 m	10 ft
<b>D</b> Length - stowed	14.25 m	46 ft 9 in	14.25 m	46 ft 9 in
Length - transport (jib tucked under)	12.19 m	40 ft	12.19 m	40 ft
<b>E</b> Width - axles retracted	2.49 m	8 ft 2 in	2.49 m	8 ft 2 in
Width - axles extended	3.94 m	12 ft 11 in	3.94 m	12 ft 11 in
<b>F</b> Wheelbase	4.11 m	13 ft 6 in	4.11 m	13 ft 6 in
<b>G</b> Ground clearance - center	38.1 cm	15 in	38.1 cm	15 in

### Productivity

Maximum lift capacity - unrestricted	300 kg	660 lb	300 kg	660 lb
- restricted	454 kg	1,000 lb	454 kg	1,000 lb
Platform rotation	160°		160°	
Vertical jib rotation - up/down	135°		135°	
Turntable rotation	360° continuous		360° continuous	
Turntable tailswing - axle retracted	0.56 m	1 ft 10 in	0.56 m	1 ft 10 in
Turntable tailswing - axle extended	1.02 m	3 ft 4 in	1.02 m	3 ft 4 in
Drive speed - stowed	4.9 km/h	3.0 mph	4.9 km/h	3.0 mph
- raised (below 125 ft)	0.6 km/h	0.38 mph	0.6 km/h	0.38 mph
Gradeability - stowed**	40%		40%	
Turning radius - axle retracted: inside	8.03 m	26 ft 4 in	8.03 m	26 ft 4 in
outside	9.96 m	32 ft 8 in	9.96 m	32 ft 8 in
Turning radius - axle extended: inside	2.90 m	9 ft 6 in	2.90 m	9 ft 6 in
outside	6.17 m	20 ft 3 in	6.17 m	20 ft 3 in
Controls	12 V DC proportional		12 V DC proportional	
Tyres - RT foam filled	445D50/710HD		445D50/710HD	

### Power

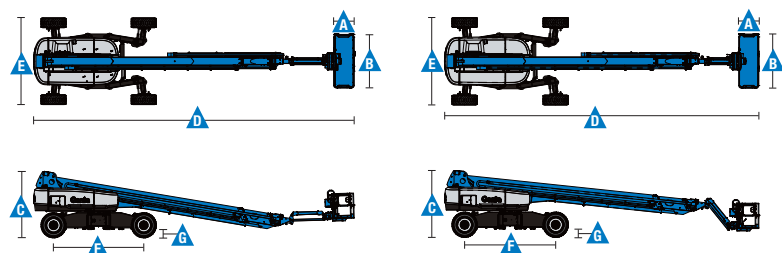
Power source	Deutz TD 2011 L04i turbo diesel 4 cylinder 74 hp (55 kW) Stage IIIA Deutz TCD2.2 L3 turbo diesel 3-cylinder 74hp (55 kW) Stage V		
Auxiliary power unit	12 V DC		
Hydraulic tank capacity	208 L	55 gal	208 L
Fuel tank capacity	151 L	40 gal	151 L

### Weight\*\*\*

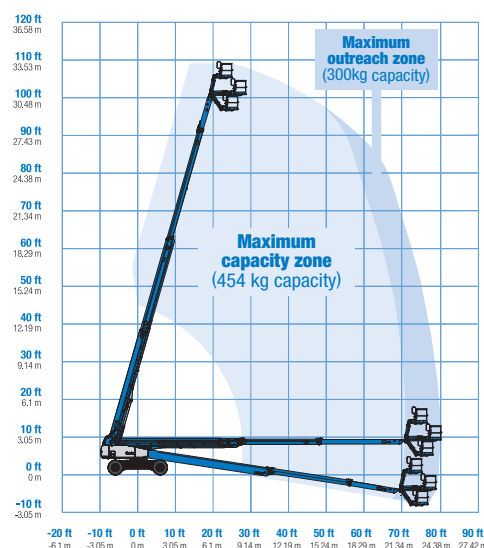
4WD	19,300 kg	42,549 lbs	20,700 kg	45,636 lbs
-----	-----------	------------	-----------	------------

### Standards Compliance

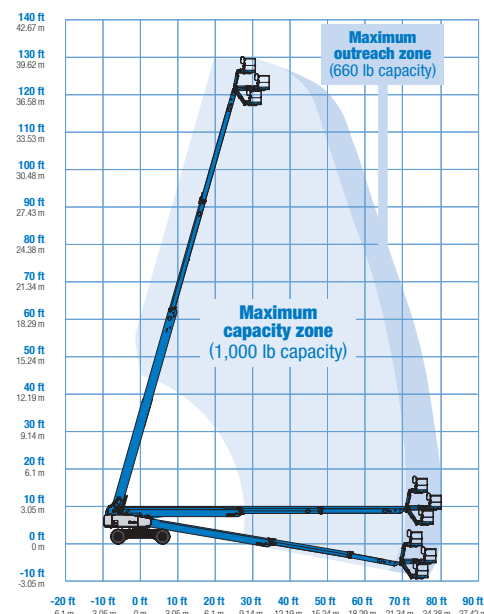
EU Directives: 2006/42/EC - Machinery (harmonized standard EN 280:2013+A1:2015); 2004/108/EC (EMC); 2000/14/EC (Outdoor Noise)



### Range Of Motion SX-105 XC



### Range Of Motion SX-125 XC



\* The metric equivalent of working height adds 2 m to platform height. U.S. adds 6 ft to platform height.

\*\* Gradeability applies to driving on slopes. See operator's manual for details regarding slope ratings.

\*\*\* Weight will vary depending on options and/or country standards.

### Features

Standard Features	Easily Configured To Meet Your Needs	Options & Accessories
<b>Measurements</b> <ul style="list-style-type: none"> <li><b>SX-105 XC</b> <ul style="list-style-type: none"> <li>34 m (111 ft) working height</li> <li>24.38 m (80 ft) horizontal reach</li> <li>300 kg (660 lb) unrestricted and 454 kg (1,000 lb) restricted lift capacity</li> </ul> </li> <li><b>SX-125 XC</b> <ul style="list-style-type: none"> <li>40.10 m (131 ft) working height</li> <li>24.38 m (80 ft) horizontal reach</li> <li>300 kg (660 lb) unrestricted and 454 kg (1,000 lb) restricted lift capacity</li> </ul> </li> </ul> <b>Productivity</b> <ul style="list-style-type: none"> <li>Self-leveling platform</li> <li>160° hydraulic platform rotation</li> <li>Thumb rocker steering</li> <li>Two work lights on chassis and platform</li> <li>Proportional joystick controls</li> <li>Hydraulic oil cooler</li> <li>Drive enable system</li> <li>Chassis tilt drive function cut-out</li> <li>AC power cord to platform</li> <li>Horn</li> <li>Hour meter</li> <li>Tilt alarm</li> <li>Descent motion &amp; travel alarms</li> <li>Flashing beacon</li> <li>360° continuous turntable rotation</li> <li>Platform &amp; ground control box covers</li> <li>Positive traction drive</li> <li>Two speed wheel motors</li> <li>Four wheel high angle steer</li> <li>Four steering modes: front, rear, crab and coordinated</li> <li>On board full diagnostics and engine monitoring display</li> <li>Telematics ready connector</li> <li>Lift Connect™ Telematics</li> <li>Lift Guard™ Contact Alarm</li> <li>Lift Tool™ Work Tray</li> </ul> <b>Power</b> <ul style="list-style-type: none"> <li>12 V DC auxiliary power</li> <li>Anti-restart engine protection</li> <li>Auto engine fault shutdown</li> <li>Intake air heater</li> <li>Engine gauge display</li> </ul>	<b>Platform Options</b> <ul style="list-style-type: none"> <li>2.44 m (8 ft) tri-entry platform with side swing gate (standard)</li> <li>Steel 1.83 m (6 ft) dual-entry platform with side swing gate</li> </ul> <b>Jib</b> <ul style="list-style-type: none"> <li>1.52 m (5 ft) jib</li> </ul> <b>Engine Options</b> <ul style="list-style-type: none"> <li>Deutz TD 2011 L04i turbo diesel 4 cylinder 74 hp (55 kW) Stage IIIA</li> <li>Deutz TCD2.2 L3 turbo diesel 3-cylinder 74hp (55 kW) Stage V</li> </ul> <b>Drive/Steer</b> <ul style="list-style-type: none"> <li>4 x 4 (standard)</li> <li>4 wheel steer (standard)</li> </ul> <b>Axles</b> <ul style="list-style-type: none"> <li>Mini XChassis™ extendable axles</li> </ul> <b>Tyres</b> <ul style="list-style-type: none"> <li>Rough terrain foam-filled (standard)</li> </ul>	<b>Productivity Options</b> <ul style="list-style-type: none"> <li>Half-mesh platform inserts</li> <li>Platform auxiliary top rail</li> <li>Power to platform: plug, socket, with optional Residual-current Circuit Breaker with Overcurrent protection<sup>(2)</sup></li> <li>Dual axis joystick steering</li> <li>Biodegradable hydraulic oil</li> <li>Hostile environment kit<sup>(2)</sup></li> <li>Panel cradle package</li> <li>Track &amp; Trace<sup>(1)</sup> (GPS unit providing machine location &amp; operating information)</li> <li>Operator Protective Structure<sup>(3)</sup></li> <li>Genie® Tech Pro™ Link Hand-held Diagnostics Device</li> </ul> <b>Power Options</b> <ul style="list-style-type: none"> <li>AC Generator Packages (110V/60 Hz, 110V/50Hz, 240V/50 Hz), 3000 W, hydraulically driven</li> <li>Diesel catalytic scrubber muffler<sup>(2)</sup></li> <li>Diesel air intake pre-cleaner<sup>(2)</sup></li> <li>Positive air shutdown system</li> </ul>



<sup>(1)</sup> Includes a first 2 years subscription

<sup>(2)</sup> Factory-fit option only

<sup>(3)</sup> Aftermarket only