

Specifications

Models S-65 XC & S-65 TraX

Measurements	Metric	US
Working height maximum*	21.81 m	71 ft
Platform height maximum	19.81 m	65 ft
Horizontal reach maximum	16.51 m	54 ft 2 in
Below ground reach	2.65 m	8 ft 8 in
A Platform length - 8 ft model	0.91 m	3 ft
Platform length - 6 ft model	0.76 m	2 ft 6 in
B Platform width - 8 ft model	2.44 m	8 ft
Platform width - 6 ft model	1.83 m	6 ft
C Height - stowed, tyres	2.81 m	9 ft 3 in
Height - stowed, TraX	2.81 m	9 ft 3 in
D Length - stowed, tyres	9.76 m	32 ft
Length - stowed, TraX	9.76 m	32 ft
Length, transport (jib tucked under)	7.80 m	25 ft 7 in
E Width, tyres	2.49 m	8 ft 2 in
Width, TraX	2.58 m	8 ft 5-11/16 in
F Wheelbase	2.50 m	8 ft 2 in
G Ground clearance - center, tyres	0.41 m	16.3 in
Ground clearance - center, TraX	0.41 m	16.3 in

Productivity

Maximum lift capacity - unrestricted	300 kg	660 lbs
- restricted	454 kg	1,000 lbs
Platform rotation	160°	160°
Vertical jib rotation	133° (+ 79° /- 54°)	
Turntable rotation	360° continuous	
Turntable tailswing	1.41 m	4 ft 7.5 in
Drive speed - stowed, tyres	4.8 km/h	3.0 mph
- stowed, TraX	3.7 km/h	2.3 mph
- raised/extended, tyres	0.3 m/s	1 ft/s
- raised/extended, TraX	0.2 m/s	0.7 ft/s
Gradeability - stowed**	45%	45%
Turning radius - inside, tyres	2.40 m	7 ft 9 in
- inside, TraX	3.48 m	11 ft 5 in
Turning radius - outside, tyres	5.50 m	18 ft 2 in
- outside, TraX	6.50 m	21 ft 4 in
Controls	12V DC proportional	
Tyres - RT foam filled	355/55D 625	
TraX - Track system	Vermeer Track System	
Ground pressure, tyres	620 kPa	90 psi
Ground pressure, TraX	170 kPa	25 psi

Power

Power source	Deutz D2011 L03i diesel 3 cylinder, 49hp (37kW) Stage IIIA Deutz TD2.2 L3 turbo diesel 3 cylinder 49hp (37kW) Stage V	
Power source, TraX	Deutz TD2.2 L3 turbo diesel 3 cylinder 60hp (45kW) Stage V	
Auxiliary power unit	12V DC	12V DC
Hydraulic tank capacity	151 L	40 gal
Fuel tank capacity - diesel	132 L	35 gal

Sound & Vibration Levels

Sound pressure level (ground workstation)	83 dBA	83 dBA
Sound pressure level (platform workstation)	79 dBA	79 dBA
Vibration	<2.5 m/s ²	<8 ft 2 in/s ²

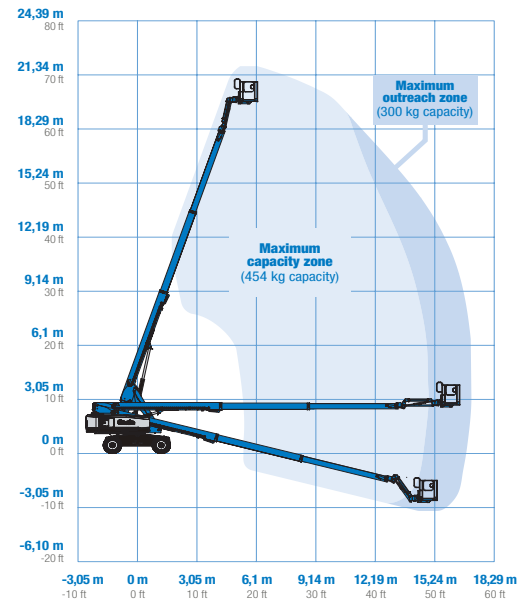
Weight***

Tyres	11,412 kg	25,160 lbs
TraX	13,154 kg	29,000 lbs

Standards Compliance

EU Directives: 2006/42/EC - Machinery (harmonized standard EN 280:2013+A1:2015); 2004/108/EC (EMC); 2000/14/EC (Outdoor Noise)

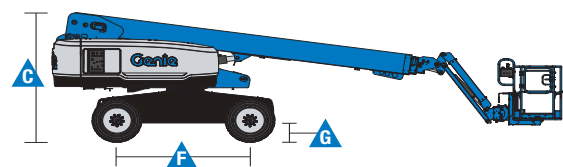
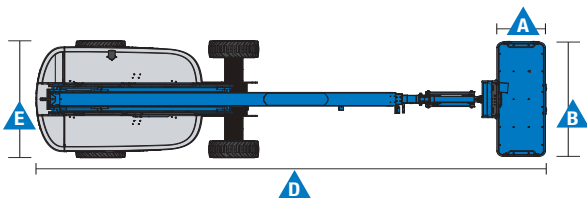
Range Of Motion S-65 XC & S-65 TraX



* The metric equivalent of working height adds 2 m to platform height. U.S. adds 6 ft to platform height.

** Gradeability applies to driving on slopes. See operator's manual for details regarding slope ratings.

*** Weight will vary depending on options and/or country standards.



Features

Standard Features	Easily Configured To Meet Your Needs	Options & Accessories
-------------------	--------------------------------------	-----------------------

Measurements

S-65 XC & S-65 TraX

- 21.81 m (71 ft) working height
- 16.51 m (54 ft 2 in) horizontal reach
- 300 kg (660 lb) unrestricted and 454 kg (1,000 lb) restricted lift capacity

Productivity

- Automatic envelope control
- Self-leveling platform
- 160° hydraulic platform rotation
- Thumb rocker steering
- Proportional joystick controls
- Hydraulic oil cooler
- Drive enable system
- Chassis tilt drive function cut-out
- AC power cord to platform
- Horn
- Hour meter
- Descent and tilt alarm
- Flashing beacon & travel alarm
- 360° continuous turntable rotation
- Positive traction drive
- Two speed wheel motors
- On board full diagnostics and engine monitoring display
- Telematics ready connector
- Lift Connect[™] Telematics
- Lift Guard[™] Contact Alarm
- Lift Tool[™] Work Tray

Power

- 12 V DC auxiliary power
- Anti-restart engine protection
- Auto engine fault shutdown
- Intake air heater
- Engine gauge package

Platform Options

- Steel 1.83 m (6 ft) dual-entry platform with side swing gate
- 2.44 m (8 ft) tri-entry platform with side swing gate (standard)

Jib

- 1.52 m (5 ft) jib

Engine Options

- Deutz D2011 L03i diesel 3 cylinder, 49hp (37kW) Stage IIIA
- Deutz TD2.2 L3 turbo diesel 3 cylinder, 49hp (37kW) Stage V
- Deutz TD2.2 L3 turbo diesel 3 cylinder, 60hp (45kW) Stage V (TraX)

Drive

- 4 x 4

Axle

- Active oscillation (standard)

Tyre Options

- Rough terrain foam-filled (standard on Tyres)
- Rough terrain non-marking foam-filled (optional on Tyres)
- Vermeer Track System (standard on TraX)

Productivity Options

- Lift Guard[™] Half and Full mesh platform⁽¹⁾
- Platform auxiliary top rail
- Airline to platform⁽¹⁾
- Power to platform: plug, socket, with optional Residual-current Circuit Breaker with Overcurrent protection⁽²⁾
- Lights package (2 on chassis, 2 on platform)⁽¹⁾
- Biodegradable hydraulic oil⁽¹⁾
- Hostile environment kit⁽¹⁾: cylinder bellows, boom wiper seals, platform and ground control box cover
- Chassis tilt lift function cut-out kit
- Panel cradle package⁽¹⁾
- Lockable platform & ground control box covers
- Genie Tech Pro Link Hand-held Diagnostics Device

Power Options

- Lift Power[™] 3kW AC generator, 110V/50Hz or 220V/50Hz
- EMEAR Cold Start kit: Inc. Engine heater & battery charger
- Diesel catalytic scrubber muffler⁽¹⁾
- Positive air shutdown system



⁽¹⁾ Factory-fit option only

⁽²⁾ Not available if a generator is selected